



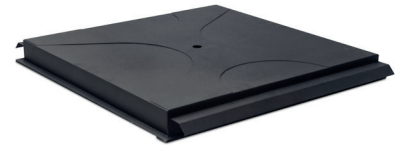
## SLS 3-Axis Speaker MA460AS



MA460AS Speaker



Sphere Sidewall Mounting Kit



Flat Ceiling kit



Recessed Ceiling kit

### SUPERIOR SOUND DISTRIBUTION FOR LARGER AUDITORIUMS

The SLS MA460AS is a high-power two-way speaker, providing pan, tilt, and rotation capabilities for larger cinemas and auditoriums. The SLS MA460AS provides a 60° vertical x 60° - 150° asymmetrical horizontal dispersion pattern for more uniform coverage in all seating locations across the auditorium or theatre.

Featuring a 400 W, 12" coaxial full-range speaker and passive crossover, the MA460AS is housed in a spherical-shaped molded enclosure that enables quick installation and easy three-axis aiming for fulfilling Dolby Atmos® aiming requirements.

The MA460AS was designed primarily for Dolby Atmos® side surround applications, but can also be used for top surrounds in some cases. The MA480AS is also available if an 80°V x 80° - 130°H asymmetric dispersion pattern is desired.

### KEY FEATURES

- Spherical-shaped molded enclosure for quick installation
- Installs from a single point, (typically all-thread)
- Three-axis aiming (pan, tilt, and rotation)
- Custom asymmetric dispersion pattern waveguide provides uniform coverage from wall positions
- Exceptionally clear, powerful sound
- Reduces Dolby Atmos system installation time
- Ceiling grid supports the speaker and optional rigging kit
- Two overhead rigging kits available: FCT-24 and RCT-24
- WMA-15 Wall-Mount Kit available



## SLS 3-Axis Speaker MA460AS

### SPECIFICATIONS\*

---

• Operating Range	60 Hz to 20 kHz
• Sensitivity (1W@1M) <sup>1</sup>	99 dB
• Coverage Angle <sup>2</sup>	60 Degrees (Vertical coverage) 60 Degrees (Horizontal at top of coverage) 150 Degrees (Horizontal at bottom of coverage)
• Continuous Power Rating <sup>3</sup>	400 W AES
• Max SPL (Calculated) 1M	125 dB Cont/ 128 dB Program
• Nominal Impedance	8 Ohms
• Transducers	
LF	12" Woofer (Single magnet neodymium motor & Interleaved sandwich voice coil)
HF	2.4" Coaxially Mounted (Titanium diaphragm & Edge-wound aluminum ribbon HF voice coil)
• Input	Barrier Strip
• Dimensions	(including yoke positioned over input plate and yoke fasteners): 20" x 21.7" x 17.8" (50.8 x 55.11 x 45.21 cm)
• Net Weight	25 lb (11.3 kg) (includes yoke mount)
• Shipping Dimensions	23.6" x 23.6" x 20.9" (60 x 60 x 53 cm)
• Shipping Weight	33.25 lb (15.1 kg)
• Enclosure	Molded
• Optional Accessories	FCT-24 Flat, Metal Tile Bridge (packaged and sold in pairs) RCT-24 Recessed, Metal Tile Bridge (packaged and sold in pairs) WMA-15 Wall Mount Kit (packaged and sold in pairs)

1. A sine wave sweep is applied to a voltage level measured at the loudspeaker terminals corresponding to 1W@1M as referenced to the loudspeaker's nominal impedance and the measuring distance. SPL is measured in an anechoic environment in the loudspeaker's far field with the exception of subwoofers, which are measured in half space. Sensitivity is determined by a Log/Log averaging method from 315 Hz to 16 kHz in the anechoic environment. Subwoofers use the same method with the half space measurement, but within their specified operating bandwidth.

2. Averaged from 500 Hz to 8 kHz.

3. AES established in accordance with AES/2-2012 standard calculated at minimum impedance

4. This documentation applies to Models: CID1000 (Speaker) and CID1004 (Rigging kit).

The English version of this document is the only legally binding version.  
Translated versions are not legally binding and are for convenience only.

Specifications are subject to change without notice.

