



## SLS 3-Axis Speaker MA390C



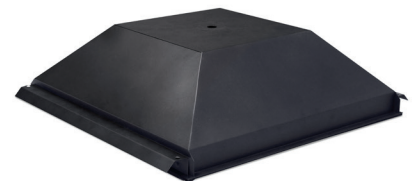
MA390C Speaker



Sphere Sidewall Mounting Kit



Flat Ceiling kit



Recessed Ceiling kit

### SMALLER, LIGHTER, EASIER TO INSTALL

The SLS 3-Axis Speaker MA390C system has been developed to reduce the time and expense involved with installing overhead speakers needed for Dolby Atmos® cinema applications.

Featuring a 300 W, 12" coaxial full-range speaker and passive crossover, the MA390C is housed in a spherical shaped, molded enclosure that enables quick installation and easy three-axis rotation for fulfilling Dolby Atmos aiming requirements.

Two ceiling-grid tile-mounts are available for the MA390C. The FCT-24 facilitates below-grid mounting, where the RCT-24 is designed to recess the speaker upwards into the ceiling, minimizing projector sight line issues.

The MA390C also works equally well for side and rear surrounds when used with the optional WMA-15 Wall-Mount Rigging Kit.

### MA390C KEY FEATURES

- 12" coaxial speaker rated @ 300W-RMS, 96dB sensitivity
- Spherical shaped speaker enclosure design that allows for quick installation and easy aiming with three-axis movement capabilities
- Ships ready to install from a single point, (typically all-thread) giving the user three-axis (pan, tilt, and rotation) adjustments without the need for additional brackets or hardware
- Two overhead rigging kits available: FCT-24, RCT-24
- WMA-15 Wall-Mount Kit

### RIGGING KIT KEY FEATURES

- Replaces a 2'x2' (0.6x0.6m) ceiling tile when used with optional rigging kit
- Reduces Dolby Atmos ceiling speaker installation time by not requiring any rigging hardware attached to building truss other than a simple safety cable
- Ceiling grid supports the speaker and optional rigging kit



## SLS 3-Axis Speaker MA390C

### SPECIFICATIONS\*

• Operating Range	60 Hz to 20 kHz
• Sensitivity (1W@1M) <sup>1</sup>	96 dB
• Coverage Angle <sup>2</sup>	90 Degrees (Conical)
• Continuous Power Rating <sup>3</sup>	300 W AES
• Max SPL (Calculated) 1M	121 dB Cont/ 124 dB Program
• Nominal Impedance	8 Ohms
• Transducers	
LF	12" Woofer
HF	1.75" Coaxially Mounted
• Input	Barrier Strip
• Unit Dimensions	20" x 21.7" x 16.1" (50.8 x 55.11 x 40.89 cm)
• Net Weight	28 lb (12.7 kg)
• Shipping Dimensions	24" x 23.6" x 18.1" in ( 61 x 60 x 46 cm)
• Shipping Weight	34 lbs (15.4 kg)
• Enclosure	Molded
• Optional Accessories	FCT-24 Flat, Metal Tile Bridge (packaged and sold in pairs) RCT-24 Recessed, Metal Tile Bridge (packaged and sold in pairs) WMA-15 Wall Mount Kit (packaged and sold in pairs)

1. A sine wave sweep is applied to a voltage level measured at the loudspeaker terminals corresponding to 1W@1M as referenced to the loudspeaker's nominal impedance and the measuring distance. SPL is measured in an anechoic environment in the loudspeaker's far field with the exception of subwoofers, which are measured in half space. Sensitivity is determined by a Log/Log averaging method from 315 Hz to 16 kHz in the anechoic environment. Subwoofers use the same method with the half space measurement, but within their specified operating bandwidth.

2. Averaged from 500 Hz to 8 kHz.

3. AES established in accordance with AES/2-2012 standard.

4. This documentation applies to Models: CID1000 (Speaker) and CID1004 (Rigging kit).

The English version of this document is the only legally binding version.  
Translated versions are not legally binding and are for convenience only.

Specifications are subject to change without notice.



Dolby Laboratories, Inc. 1275 Market Street, San Francisco, CA 94103-1410 USA [dolby.com](http://dolby.com)

Dolby and the double-D symbol are registered trademarks of Dolby Laboratories.  
© 2016 Dolby Laboratories, Inc. All rights reserved.