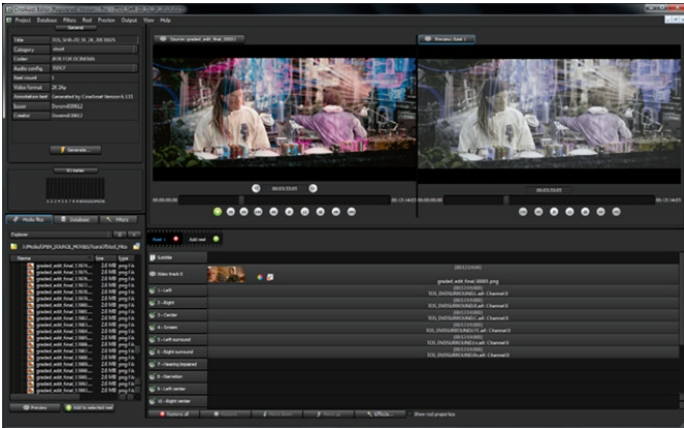
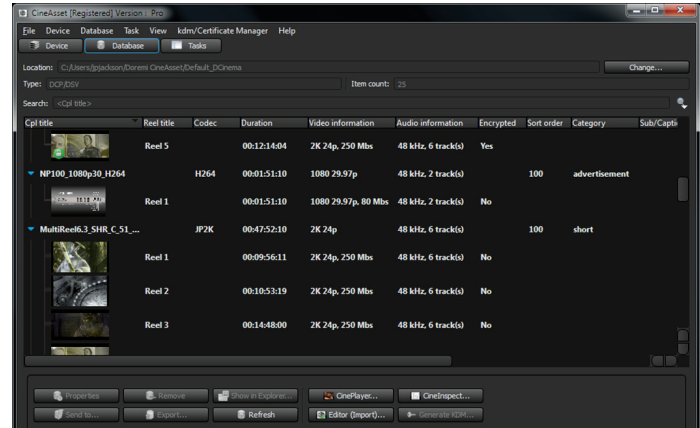




Dolby® CineAsset



Dolby CineAsset DCP Editor



Dolby CineAsset Content Management

Dolby® CineAsset is a complete mastering software suite that can create and play back DCI-compliant digital cinema packages (DCPs) from virtually any source. The Pro version of Dolby CineAsset allows for the generation of encrypted DCPs and provides the ability to easily generate key delivery messages (KDMs) for any encrypted content in the Dolby CineAsset database.

With Dolby CineAsset, asset management has never been simpler. Drop folders allow for automated transfer of image sequences and other media files into the database. Dolby CineAsset offers additional functionality when used with Dolby DCP-2000, Dolby DCP-2K4, Dolby ShowVault/IMB, IMS1000, IMS2000 and IMS3000 servers. The additional functionality includes transport controls, file transfer, and KDM management for the connected device.

The Dolby CineAsset suite includes Dolby CineAsset, Dolby CineAsset Player, and the Dolby CineInspect DCP validation tool.

CINEASSET KEY FEATURES

- Interop and SMPTE DCP support
- Create and play back DCPs with subtitles
- Generate encrypted DCPs (Pro version only)
- Subtitle editor
- Optional render nodes reduce render times
- Dolby Atmos® support
- Multiple filters (scale, XYZ color space conversion, timecode burn-in, logo overlay, audio delay, trimmer)
- Custom LUTs and Matrix values for color conversion
- High-frame-rate support
- Supplemental DCP support
- KDM and certificate manager (Pro version only)
- Generate KDMs for encrypted content (Pro version only)
- Drop-in folder for automated transfer of image sequences and other media files
- Dolby CineInspect DCP validation tool
- Event cinema support with H.264 encoding, MPEG-2 encoding, and VC-1 wrapping
- DCP import and editing with DKDM support (Pro version only)
- Archive frame rate support
- Theatre key retrieval
- Command line support

CINEASSET DEVICE CONTROL*

- Device KDM and certificate manager
 - Convert, transfer, schedule, and play back 2D or 3D video clips
- * *Supported Dolby servers: DCP-2000, ShowVault/IMB, DCP-2K4, IMS1000, IMS2000, IMS3000*

CINEASSET PLAYER

- Real-time XYZ to RGB color conversion
- Play back encrypted DCPs
- Play back DCPs with subtitles
- Play back other multimedia formats (MXF, MOV, etc.)
- Adjustable playback frame rate
- SDI output with third party I/O card (supported I/O devices: Blackmagic Design® Decklink®)
- Create, edit and play Playlists



Dolby CineAsset Mastering Software Suite

SYSTEM REQUIREMENTS—WINDOWS

- OS: Windows® 7, Windows 8.1, and Windows 10 64-bit
- RAM: 4 GB minimum; 8 GB recommended
- CPU: Intel® Core™ 2 Duo minimum; Core i7 quad core or Xeon® recommended
- Graphics adapter: minimum 512 MB dedicated memory (Intel integrated graphics not recommended)

SYSTEM REQUIREMENTS—MAC

- OS: Mac® OS X 10.8.X to 10.11.X
- RAM: 4 GB minimum; 8 GB recommended
- CPU: Intel Core 2 Duo minimum; Core i7 quad core or Xeon recommended
- Graphics adapter: minimum 512 MB dedicated memory (Intel integrated graphics not recommended)

SYSTEM REQUIREMENTS—LINUX

- OS: CentOS® 6 and CentOS® 7 64 bit
- RAM: 4 GB minimum; 8 GB recommended
- Intel Core 2 Duo minimum; Core i7 quad-core recommended
- Graphics adapter with minimum 512 MB dedicated memory (Intel integrated graphics not recommended)

SUPPORTED CONTAINERS

- AVI
- MOV
- MXF
- MPG
- TS
- M2TS
- MTS
- MP4
- MKV

SUPPORTED VIDEO CODECS

- JPEG 2000
- DNxHD*, **
- Apple ProRes
- YUV Uncompressed (8–10 bits)
- XVID
- MPEG-4
- AVC/H.264
- VC-1
- MPEG-2
- DVCPRO HD
- DVCPRO 25/50
- Photo JPEG
- MJPEG-A&B
- DV

* To use Avid® DNxHD codec technology from Avid Technology, Inc., in CineAsset from Dolby, plug a licensed Avid DNxHD codec into a licensed QuickTime® player. Avid Technology, Inc., is not affiliated with Dolby.

**DNxHD video codecs are not supported when running CineAsset on a Linux OS.

† To use MP3 codec technology in CineAsset, install a licensed QuickTime player on your computer. QuickTime player is not a Dolby product, and it is not provided as part of CineAsset available from Dolby.

‡ The MP3 audio format is not supported when running CineAsset on a Linux® OS.

The English version of this document is the only legally binding version. Translated versions are not legally binding and are for convenience only.

Specifications are subject to change without notice.



Dolby Laboratories, Inc. 1275 Market Street, San Francisco, CA 94103-1410 USA dolby.com

Dolby, Dolby Atmos, and the double-D symbol are registered trademarks of Dolby Laboratories. All other trademarks remain the property of their respective owners. © 2016 Dolby Laboratories, Inc. All rights reserved.

SUPPORTED IMAGE SEQUENCES

- BMP
- TIFF
- TGA
- DPX
- JPG
- J2C

SUPPORTED AUDIO

- WAV
- MP3 †‡
- MP2
- AAC
- AIF/AIFF
- Dolby AC-3

SUPPORTED OUTPUT FORMATS

JPEG 2000

- 2D and 3D at up to 4K resolution
- Bit rate: 50–500 Mbps
- Speed: Real-time or faster processing when using optional render nodes

MPEG-2

- I-Only or Long GOP
- 1080p @ 80 Mbps

H.264

- 1080p @ 50 Mbps

VC-1

- DCP wrapping only (no transcode)

When using CineAsset Player for real-time playback of 2K, 24 fps DCPs with color conversion, the following minimum configuration is recommended:

- CPU(s) with minimum 12 threads (12 physical cores or 6 cores with HT Technology)
- 8 GB RAM
- Graphics adapter with minimum 1 GB dedicated memory
- Fast local storage dedicated to DCP content (7,200 RPM SATA III HDD or SSD)