

Rooms with Dolby Voice® Pro Data Sheet



Product overview

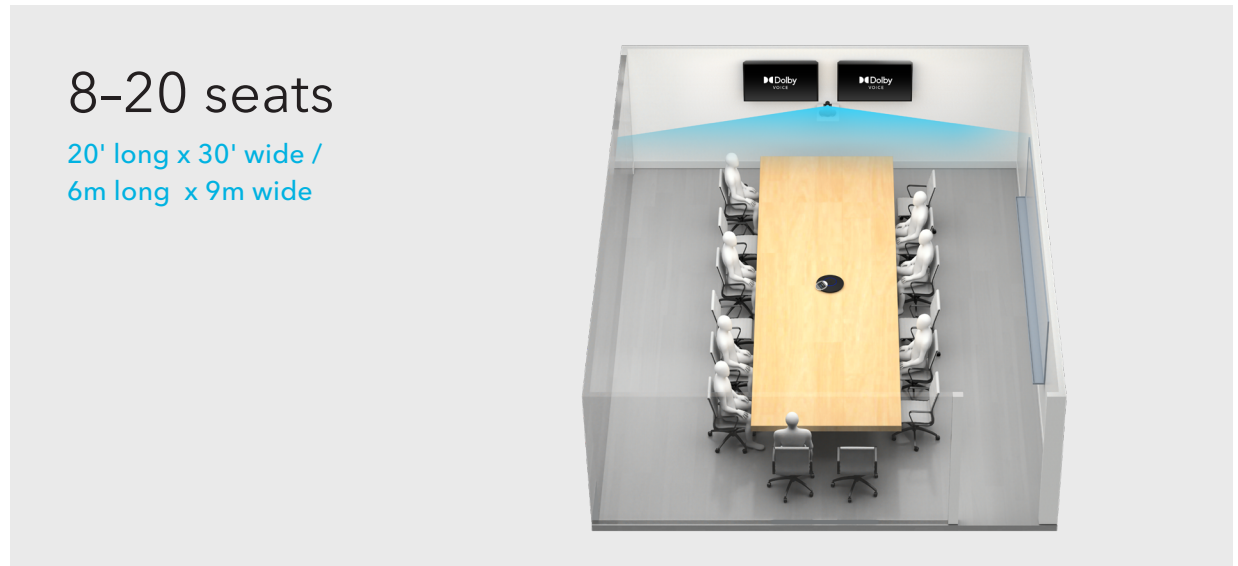
Dolby Voice Room Pro is a minimalist video conferencing solution designed for large conference and board rooms that's easy for participants to use and for IT to manage. Featuring the new Dolby Voice Camera Pro, Dolby's conference phone and hub can now flex to more spaces than ever before. With a dual camera system featuring 12x optical zoom, advanced video features, and full room pick up audio, the Dolby Voice Room Pro re-imagines the video meetings with a unique approach that promotes natural and more productive meetings for all participants. Co-developed with leading service providers, the solution intelligently flexes to adapt to the way we work and enable what's truly important—the human connection.



Designed for Large rooms

Pro is designed to flex across larger spaces of 10 people or more, with a high-end dual sensor camera, exceptional audio and touch control from the Phone. This solution extends the capabilities of Room with long-range 12x zoom, with coverage up to 30 feet.

- Advanced video and optics seamlessly frame conversations across larger distances
- Best-in-class performance capturing distant voices
- Intuitive controls and included IT tools simplify adoption & roll-out



Features overview

Pro's premium camera and features are tailored for larger conference rooms and boardrooms. Advanced features and optics dynamically adapt to capture every detail of the conversation.

Video features



Camera Pro

With 12x optical zoom, WDR video mapping and near-silent PTZ



Intelligent scene framing

Automatically & discreetly frames conversations—not just talking heads—for immersive discussion



Easy sharing

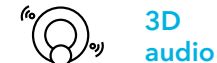
Supports HDMI input or wireless sharing from partner apps



Whiteboard view

Share and present from the whiteboard with a tap. Room corrects & enhances the image for remote users

Audio features



3D audio

Captures and maps voices to create the feeling of meeting in-person



Dynamic leveling

Boosts quiet voices while distinguishing speech from noise to make all voices clear at a consistent volume



Full-room pickup

Captures near and distant voices, as well as overlapping speech, so the conversation is heard as intended

Room Pro



Pro is ready for your larger spaces with powerful, high-end optics and expansive audio coverage. Install in minutes with included mounts or standard supports and placements.

- 1) Camera Pro's advanced optics keep everyone in view, with support for inverted mounting
- 2) Hub processes all video while powering advances imaging features
- 3) Phone captures and outputs audio with touch meeting controls built-in
- 4) *Optional* Satellite Mic kit extends Phone's coverage up to 30'

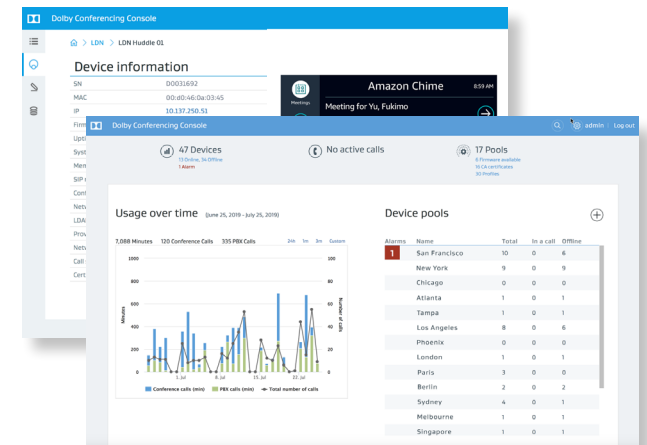


Dolby Conferencing Console

Device management, powerful analytics and troubleshooting tools—all included with Dolby Voice products. This virtual appliance provides centralized device management with version control and support for a variety of enterprise platforms.

IT administrators get a system dashboard with overall status, simplified device provisioning and updating with logical groupings and support for real-time monitoring and troubleshooting.

- Easily deploy Rooms with Dolby Voice at scale
- Centralized management with intuitive dashboard
- Powerful diagnostic tools, alerts and real-time reporting



Pro Data Sheet

TECHNICAL FEATURES, SPECIFICATIONS AND SETUP



Dolby Voice Camera Pro

Image sensor: 1 / 2.8 inch HD CMOS Sensor, 2.07 megapixel
Maximum horizontal view angle: 72.5°
Lens: Auto/manual focus
Zoom: 12x optical zoom
Iris: F1.8 to F2.4
Output format: YUV422
Connectivity: 2 x USB 3.0
Pan parameters: -170° ~ +170°
Tilt parameters: -30° ~ +90°
Wide dynamic range
Intelligent scene framing
Whiteboard mode

Video

Output Resolution: 1080p
Frame Rate: up to 60 fps
Codecs: H.264 Baseline and High Profile, VP8

Dolby Conference Phone

Operating Modes: Dolby Voice, IP phone Service
provider integration: IP connection and preconfigured access to Dolby Voice enabled conferencing services
Touch-screen meeting management:

- One-touch meeting start with Bluetooth Low Energy (BLE) connection on supported partner apps
- Viewable roster of meeting attendees and active speaker, add/remove participants
- Contact directory with one-touch dialing
- Mute/unmute, three-way conferencing, conferencing join/split/hold/resume, call waiting, call history
- Broad interoperability. For details, visit dolby.com/interop

Audio

Features: Full duplex, noise suppression, acoustic echo cancellation, voice placement
Codecs: DVC-2/G.711a/G.711u/G.722/G.729ab/Opus
Audio range: Wideband HD, 160Hz - 8kHz
Microphone range: 6.1m (20ft)
Peak volume: 88 dB SPL at 1/2 meter (1.6 ft)

Dolby Voice Hub

OS: Linux
Monitor support: Dual (x2) display out ports
Content sharing: Display in port-local/broadcast and wireless sharing through partner apps
USB: USB 3.0 host ports (x3), USB 3.0 device port
Network: 10/100 Mb (RJ-45) network interface

Network Provisioning

IP address configuration: TCP/IP (IPv4), DHCP/ static IP
Web: HTTP/HTTPS web server, web proxy auto-detection and proxy auto-configuration
Support, WebRTC
Time and date synchronization: SNTP
VLAN support: Dolby Voice and IP telephony calls on separate voice and data VLANs
QoS support: IEEE 802.1p/Q tagging (VLAN), Layer 3 TOS and DSCP

Setup

For best results, use the port connections at the back of the Phone, Hub and Camera Pro as indicated to the right.

Included in the Box

USB, HDMI & Ethernet cables, Camera Pro and Hub universale power supplies, Camera Pro wall mounting bracket

