

# Rooms with Dolby Voice®

## Pro Data Sheet



### Product overview

Dolby Voice Room Pro is a minimalist video conferencing solution designed for large conference and board rooms that's easy for participants to use and for IT to manage. Featuring the new Dolby Voice Camera Pro, Dolby's conference phone and hub can now flex to more spaces than ever before. With a dual camera system featuring 12x optical zoom, advanced video features, and full room pick up audio, the Dolby Voice Room Pro re-imagines the video meetings with a unique approach that promotes natural and more productive meetings for all participants. Co-developed with leading service providers, the solution intelligently flexes to adapt to the way we work and enable what's truly important—the human connection.



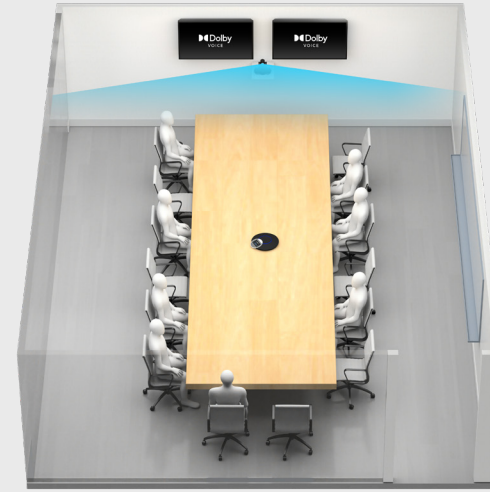
## Designed for Large rooms

Pro is designed to flex across larger spaces of 10 people or more, with a high-end dual sensor camera, exceptional audio and touch control from the Phone. This solution extends the capabilities of Room with long-range 12x zoom, with coverage up to 30 feet.

- Advanced video and optics seamlessly frame conversations across larger distances
- Best-in-class performance capturing distant voices
- Intuitive controls and included IT tools simplify adoption & roll-out

8-20 seats

20' long x 30' wide /  
6m long x 9m wide



## Features overview

Pro's premium camera and features are tailored for larger conference rooms and boardrooms. Advanced features and optics dynamically adapt to capture every detail of the conversation.

### Video features



#### Camera Pro

With 12x optical zoom, WDR video mapping and near-silent PTZ



#### Easy sharing

Supports HDMI input or wireless sharing from partner apps



#### Intelligent scene framing

Automatically & discreetly frames conversations—not just talking heads—for immersive discussion



#### Whiteboard view

Share and present from the whiteboard with a tap. Room corrects & enhances the image for remote users

### Audio features



#### 3D audio

Captures and maps voices to create the feeling of meeting in-person



#### Full-room pickup

Captures near and distant voices, as well as overlapping speech, so the conversation is heard as intended



#### Dynamic leveling

Boosts quiet voices while distinguishing speech from noise to make all voices clear at a consistent volume

## Room Pro



Pro is ready for your larger spaces with powerful, high-end optics and expansive audio coverage. Install in minutes with included mounts or standard supports and placements.

- 1) Camera Pro's advanced optics keep everyone in view, with support for inverted mounting
- 2) Hub processes all video while powering advances imaging features
- 3) Phone captures and outputs audio with touch meeting controls built-in
- 4) *Optional* Satellite Mic kit extends Phone's coverage up to 30'

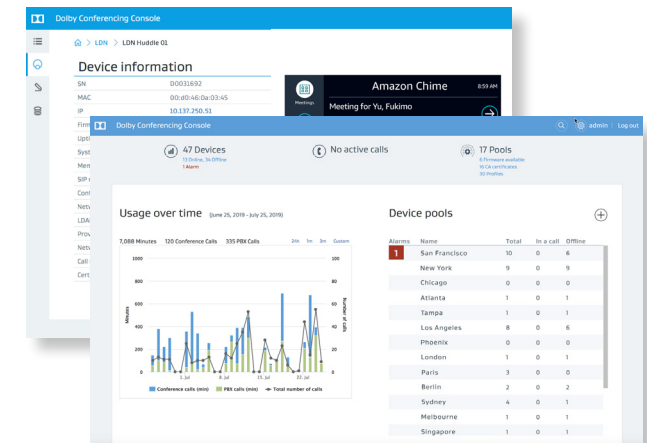


## Dolby Conferencing Console

Device management, powerful analytics and troubleshooting tools—all included with Dolby Voice products. This virtual appliance provides centralized device management with version control and support for a variety of enterprise platforms.

IT administrators get a system dashboard with overall status, simplified device provisioning and updating with logical groupings and support for real-time monitoring and troubleshooting.

- Easily deploy Rooms with Dolby Voice at scale
- Centralized management with intuitive dashboard
- Powerful diagnostic tools, alerts and real-time reporting



## Pro Data Sheet

# TECHNICAL FEATURES, SPECIFICATIONS AND SETUP



### Dolby Voice Camera Pro

Image sensor: 1 / 2.8 inch HD CMOS Sensor,  
2.07 megapixel  
Maximum horizontal view angle: 72.5°  
Lens: Auto/manual focus  
Zoom: 12x optical zoom  
Iris: F1.8 to F2.4  
Output format: YUV422  
Connectivity: 2 x USB 3.0  
Pan parameters: -170° ~ +170°  
Tilt parameters: -30° ~ +90°  
Wide dynamic range  
Intelligent scene framing  
Whiteboard mode

### Video

Output Resolution: 1080p  
Frame Rate: up to 60 fps  
Codecs: H.264 Baseline and High Profile, VP8

### Dolby Conference Phone

Operating Modes: Dolby Voice, IP phone Service  
provider integration: IP connection and preconfigured  
access to Dolby Voice enabled conferencing services  
Touch-screen meeting management:

- One-touch meeting start with Bluetooth Low Energy (BLE) connection on supported partner apps
- Viewable roster of meeting attendees and active speaker, add/remove participants
- Contact directory with one-touch dialing
- Mute/unmute, three-way conferencing, conferencing join/split/hold/resume, call waiting, call history
- Broad interoperability. For details, visit [dolby.com/interop](https://dolby.com/interop)

### Audio

Features: Full duplex, noise suppression, acoustic echo cancellation, voice placement  
Codecs: DVC-2/G.711a/G.711u/G.722/G.729ab/Opus  
Audio range: Wideband HD, 160Hz - 8kHz  
Microphone range: 6.1m (20ft)  
Peak volume: 88 dB SPL at 1/2 meter (1.6 ft)

### Dolby Voice Hub

OS: Linux  
Monitor support: Dual (x2) display out ports  
Content sharing: Display in port-local/broadcast  
and wireless sharing through partner apps  
USB: USB 3.0 host ports (x3), USB 3.0 device port  
Network: 10/100 Mb (RJ-45) network interface

### Network Provisioning

IP address configuration: TCP/IP (IPv4), DHCP/ static IP  
Web: HTTP/HTTPS web server, web proxy auto-detection  
and proxy auto-configuration  
Support, WebRTC  
Time and date synchronization: SNTP  
VLAN support: Dolby Voice and IP telephony calls on  
separate voice and data VLANs  
QoS support: IEEE 802.1p/Q tagging (VLAN), Layer 3  
TOS and DSCP

### Compliance

This product complies with the European RoHS Directive  
2011/65/EU including amendment (EU) 2015/863.

## Setup

For best results, use the port connections  
at the back of the Phone, Hub and Camera  
Pro as indicated to the right.

### Included in the Box

USB, HDMI & Ethernet cables, Camera Pro  
and Hub universale power supplies, Camera  
Pro wall mounting bracket

### BACK OF CAMERA PRO, PHONE AND HUB

