

Rooms with Dolby Voice®

Huddle Data Sheet



Perfectly adapted for your huddle spaces

Huddle is the Rooms with Dolby Voice® solution optimized for huddle spaces, packing industry-leading design and technology into a tiny footprint that easily blends into the smallest meeting space.

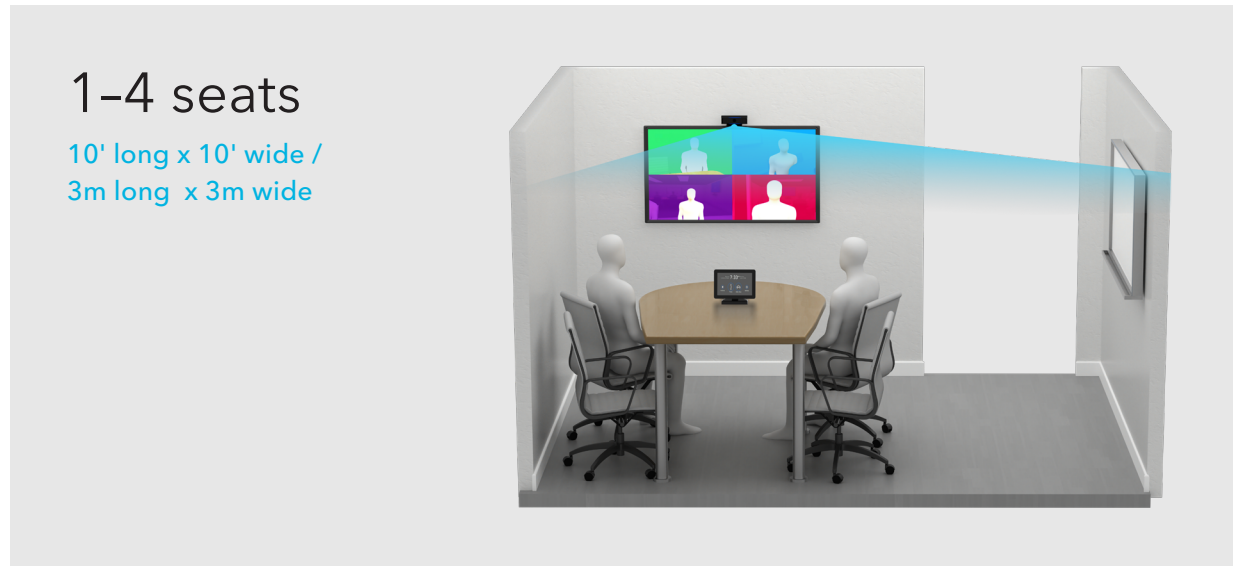
Seamlessly integrated with leading service providers, it adapts to rooms, minimizes equipment and delivers a natural meeting experience—all in an affordable solution with free enterprise management tools.



Designed for Huddle rooms

An incredible meeting is easier than ever, even in smaller room sizes. Huddle features a wide-angle camera to capture every person, even when seating is tight. An intuitive touch control with support for calendar integration makes joining & managing meetings simple, and Dolby's innovative audio technologies adapt to your space.

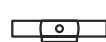
- 110° wide-angle lens captures meeting participants and whiteboards
- Intelligent Acoustics™ optimizes audio for incredible quality, even in spaces with high ceilings, glass walls, and other hard surfaces
- Compact design and flexible mounting provide installation options where space is a premium



Features overview

Huddle is an affordable solution designed specifically for overcoming the challenges of video meetings in small spaces. Packed with Dolby's innovative video & audio technologies, it captures details as vividly as if you were in the meeting room.

Video features



**Wide-angle
4k camera**

110° viewing angle keeps people in view, even when space is tight



**HDR video
mapping**

Continuously balances exposure levels for improved visibility no matter the lighting conditions



**HDMI
input**

Easily share screens and content

Audio features



**3D
audio**

Captures and maps voices to create the feeling of meeting in-person

**Intelligent
Acoustics™**

Regularly calibrates and optimizes Huddle's audio for your space, whether using your TV speakers or a sound bar



**Dynamic
leveling**

Boosts quiet voices while distinguishing speech from noise to make all voices clear at a consistent volume

Huddle Plus



Your best meetings yet come included with Huddle Plus. The touch controller makes joining & managing meetings easy. Everything you need to get started—mounting brackets, cables and an optional satellite microphone—comes in the box.

- 1) The Huddle integrates a high quality camera, mic array and processing into one compact device that optimizes audio output for any TV or sound bar
- 2) Touch screen controller displays calendar and meeting controls
- 3) Connect the optional satellite mic to provide optimum audioaudio, Huddle will detect when the mic will help most

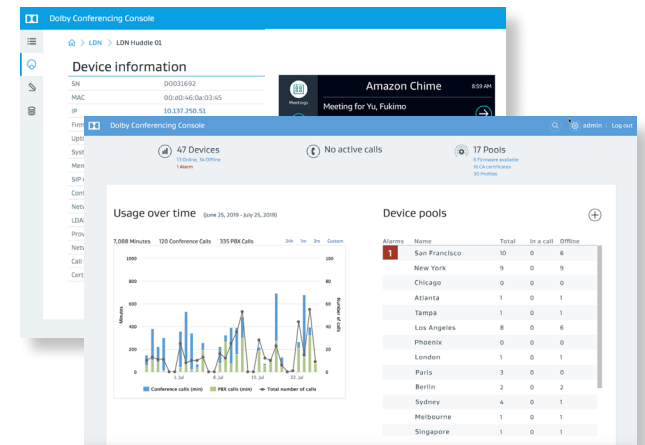


Dolby Conferencing Console

Device management, powerful analytics and troubleshooting tools—all included with Dolby Voice products. This virtual appliance provides centralized device management with version control and support for a variety of enterprise platforms.

IT administrators get a system dashboard with overall status, simplified device provisioning and updating with logical groupings and support for real-time monitoring and troubleshooting.

- Easily deploy Rooms with Dolby Voice at scale
- Centralized management with intuitive dashboard
- Powerful diagnostic tools, alerts and real-time reporting



Camera

4k Image Sensor
1/1.8" CMOS
Horizontal Field of View: 110°
Lens: Fixed focus, f/1.8 aperture
HDR video mapping
EPTZ capable

Video

Output Resolution: 1080p
Frame Rate: 30 fps
Codecs: H.264 Baseline and High Profile, VP8

Audio

Features: Full duplex, noise suppression, acoustic echo cancellation, voice separation, spatial mic array
Codecs: DVC-2/G.711a/G.711u/G.722/G.729ab/Opus
Audio range: Super wideband, 160Hz - 16kHz
Microphone range: 4.5m (15ft)
Audio output through HDMI

Platform features

OS: Linux
Monitor support: Single HDMI output to TV
Content sharing: HDMI input–wireless sharing through partner apps
USB: USB 3.0 host ports (x2)
Wi-Fi and BLE
Network: 10/100/1000 Mb (RJ-45) network interface
Kensington lock
Supports tripod mounting

Network provisioning

IP address configuration: TCP/IP (IPv4), DHCP/static IP
HTTP/HTTPS web interface for administration
Web proxy auto-detection and proxy auto-configuration
Time and date synchronization: SNTP
VLAN support: Dolby Voice and IP telephony calls on separate voice and data VLANs
QoS support: IEEE 802.1p/Q tagging (VLAN), Layer 3 TOS and DSCP RTCP support: (RFC 1889)
LDAP directory support

Plug-and-play provisioning enabled by Dolby Voice Conferencing Console cloud provisioning service

SIP and WebRTC Support

Incoming and outgoing calls
Call hold/resume, call transfer and call waiting
3-way conferencing, merge and split
Directory and call history with one touch dialing
Support SIP/BFCP for content sharing interoperability
Communications protocols: IETF SIP (RFC 3261 and companion RFCs)
SIP Video Conferencing
WebRTC

Security

Encryption: TLS (Transport Layer Security) for SIP, SRTP encryption for media, 128 bits AES
Network Access Control: IEEE 802.1x
Built-in certificate

Development

Chromium Web App SDK

Setup

For best results, use the port connections at the back of the Huddle as indicated to the right.

Included in the Box

Wall mounting bracket, HDMI cable, 90° HDMI adapter, ethernet cable, and power supply

