



Dolby DSR1090

10" Two-Way Surround Speaker

—

Dolby DSR1090

10" Two-Way Surround Speaker

Amazing surround detail for small-to-medium sized auditoriums

The new Dolby® DSR1090 is a two-way passive surround speaker intended for small to medium-sized cinema auditoriums. Designed for surround use in either 5.1, Dolby Surround 7.1, or Dolby Atmos applications, the DSR1090 is equipped to perform equally well in side-surround, rear-surround, and overhead positions.

A carefully chosen 10" woofer provides robust low/mid frequency while a 1" compression driver mated with a 90° horizontal x 60° vertical waveguide, helps deliver smooth, even coverage throughout the speaker's entire operating range. The DSR1090 features a passive crossover and 250 Watt power handling. It's simple to install and ready to play right out of the box, making your surround installation quick, elegant, and remarkably effective.



Dolby DSR1090

Components

The **DSR1090** 10" woofer is equipped with;

- 2" copper clad aluminum wire (CCAW) voice coil
- Resonance free and heavy-duty steel basket design
- Finite Element Method (FEM) optimized motor and suspension



DSR1090 10" Driver

Dolby DSR1090

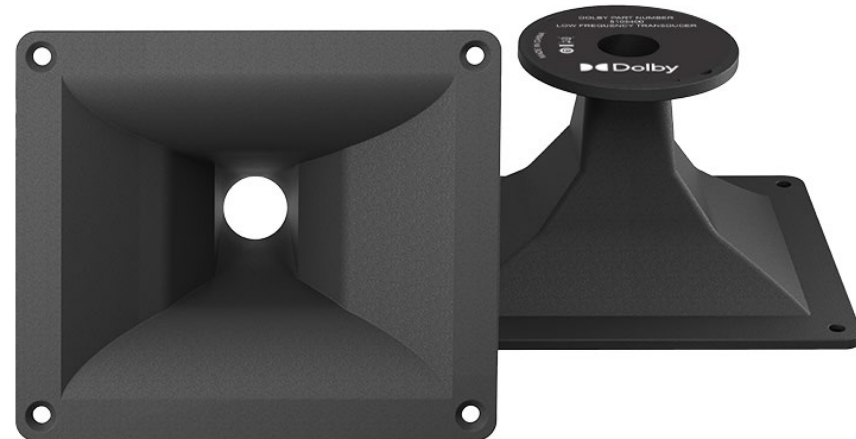
Components

The **DSR1090** high-frequency section is equipped with;

- 1" compression driver with a Copper Clad Aluminum wire (CCAW) voice coil and a Finite Element Method (FEM) optimized motor, phase plug and diaphragm
- 90° horizontal by 60° vertical, 1" throat, aluminum horn



DSR1090 1" Compression Driver



DSR1090 Aluminum Horn

Dolby DSR1090

Ergonomics

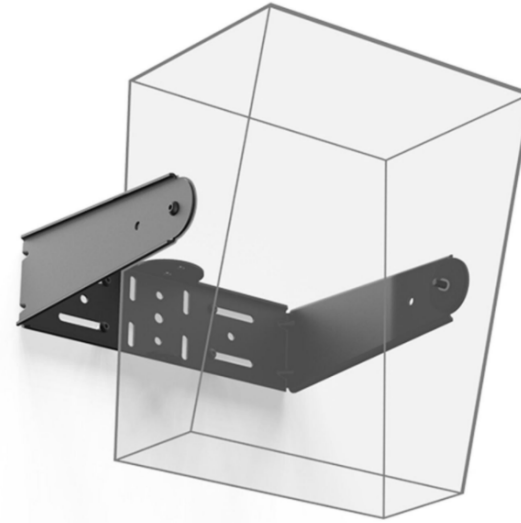
Top-of-cabinet advanced input plate featuring high-current, spring-loaded terminal block with adequate space for easy series/parallel wiring



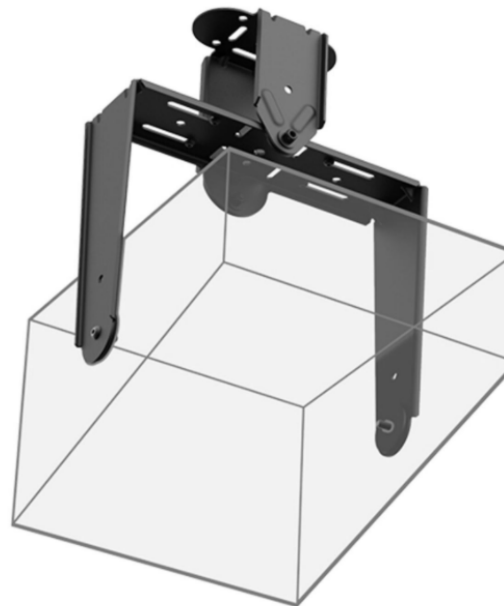
Dolby DSR1090

Ergonomics

Engineered with versatility in mind, the **DSR1090** cabinets are equally at home operating as rear-surrounds, side-surrounds or in overhead applications. Equipped with threaded inserts which when used with the **YK1090 Yoke** and the **MMA-1090** (both sold separately), allow for various installation configurations.



**YK-1090 Sidewall
mounting kit**



**YK-1090 with MMA-1090
Multi mount accessory kit**

Dolby DSR1090

Specifications

Frequency range ¹	60 Hz - 20 kHz
Usable LF response ²	50 Hz
Coverage window ³	90° H X 60° V
Rated impedance	8 Ohms
Whole-space sensitivity @ 1 watt ⁴	95 dB
Half-space sensitivity @ 1 watt ⁵	97 dB
Power handling ⁶	250 W @ 40 Vrms
Power draw ⁷	160 W
Maximum voltage peak ⁸	142 Vpk
Whole-space maximum continuous SPL @ 1 meter ⁹	119 dB
Half-space maximum continuous SPL @ 1 meter ⁹	121 dB
Whole-space measured acoustic peak SPL @ 1 meter ¹⁰	129 dB
Half-space measured acoustic peak SPL @ 1 meter ¹⁰	131 dB
Transducers	MF - 10" HF - 1" Compression driver
Input	Advanced input plate w/high-current spring loaded terminal block
Enclosure	Wood
Accessories	YK1090 Yoke and MMA-1090 (both sold separately)
Dimensions (unit)	19.26" H x 15.91" W x 11.56" D (48.9 x 40.4 x 29.4 cm)
Weight (unit)	31 lb (14.1 kg)

Dolby DSR1090

Specifications

1. +3 dB/-6 dB in half space conditions using required DSP
2. -10 dB in half space conditions
3. -6 dB averaged to on-axis response
4. Measured with 12 dB crest pink noise @ 2.83 Vrms in whole space conditions with an 80 Hz high-pass filter (HPF) and 48 dB low-pass filter (LPF) @ the rated system high frequency (80 Hz is a typical crossover point into Atmos surround bass management)
5. Measured with 12 dB crest pink noise @ 2.83 Vrms in half-space conditions with required high pass filter (HPF) and 48 dB low pass filter (LPF) @ the rated system frequency range
6. 12 dB crest pink noise for two hours with required HPF and 48 dB low pass filter (LPF) @ the rated system frequency range, calculated power based on minimum impedance
7. Measured average power over 5 seconds at the rated Vrms using 12 dB crest pink noise with required HPF and LPF. This measured power draw from the amplifier is useful for estimating amplifier sizing in overall system design
8. Vpk over 100 hours using stepped Hann shaped sine wave bursts at 1/3rd oct spacing within the rated passband of the system. This data is useful for setting peak stop limiters and amplifier selection
9. Calculated from rated sensitivity and power
10. Measured peak SPL over 5 seconds at rated Vrms using 12 dB crest pink noise with required HPF

The English version of this document is the only legally binding version.
Translated versions are not legally binding and are for convenience only.

*Specifications are subject to change without notice.

This documentation applies to Model CID1028



Dolby Laboratories, Inc. 1275 Market Street, San Francisco, CA 94103-1410 USAT +1-415-558-0200 [dolby.com](https://www.dolby.com)
Dolby, Dolby Atmos, and the double-D symbol are registered trademarks of Dolby Laboratories.
© 2022 Dolby Laboratories, Inc. All rights reserved.